



Buxton Sixth Form



SIXTH FORM PROSPECTUS

www.buxton.derbyshire.sch.uk



In the 2020 OFSTED report our Sixth Form was described as “ambitious for all” and this sums up our ethos.

EDUCATION
is the most powerful weapon
which you can use to change the world.
Nelson Mandela

Welcome!



Here at BCS Sixth Form, we open our doors to hard-working and ambitious students and help them on the next stage of their journey. Regardless of whether you wish to continue academic

pursuits at university or secure an apprenticeship or employment, you will be supported by an experienced and caring team of staff during your time with us.

Core to the programme offered is the wide range of subjects studied to A Level or alternative Level 3 qualifications, more detail of which forms the bulk of this booklet. Class sizes are usually much smaller than students have been used to, but the demand for work outside of lessons will certainly be higher! Students need to be determined and take their studies very seriously to succeed. Although we value more than just grades, we do pride ourselves on our exam outcomes. BCS Sixth Form results are regularly above national averages. In 2023 our average A Level grade of B- was supported by an impressive 100% pass rate across all qualifications.

However, students are not only academically successful with us but enjoy developing a wide range of skills outside of the classroom that will stand them in good stead in their adult life, whatever they go on to do.

Life at BCS Sixth Form is never boring; our students work hard but are also encouraged to have fun along the way. Having a good work/life balance is really important for all of us but especially when studying hard for crucial exams. That's why at BCS Sixth Form, we place real emphasis on having fun in a friendly and caring community.

We are incredibly proud of all of our students and it is always a privilege to witness them grow into successful young adults and we hope that you too will become a member of our ever-growing family.

Jackie Cruse *Head of Sixth Form*

I am very proud of our Sixth Form provision and what our students achieve, both inside and outside of the classroom.

We develop the academic potential of our students but also the softer skills and experiences that will prepare them for life beyond BCS. The Sixth Form team understand the importance of getting to know the students really well to be able to tailor the necessary support and challenge needed to secure success. I hope you enjoy reading more about our Sixth Form and we look forward to seeing you at our Open Evening in October.

Mrs Sam Jones *Headteacher*



Preparing for life after Sixth Form

The majority of our students go on to traditional university courses and a key part of the guidance and support we give them goes into preparing for this. Every year we are proud to send students to a range of impressive universities. Students secure places to study all over the country including at elite institutions such as Oxford and Cambridge and also further afield at St Andrew's, Glasgow and Edinburgh.

BCS Sixth Formers have gone on to study medicine, professional policing, graphic design, art curation, politics, neuroscience to name a few degrees. We work hard with students to help them find a course that will fulfil their passions and interests.



Ethan "One experience I'll never forget that BCS Sixth Form offered me was the opportunity to visit Auschwitz as part of the international Lessons From Auschwitz programme. It really deepened my understanding and appreciation of the horrors of the Holocaust, and I was able to share that experience with staff and fellow students through a range of presentations which was just as much of an honour.



I also completed an EPQ on the extent to which surveillance and terrorism in the UK & USA is justified after 9/11. I'm going to be studying computer science at university, and this was a chance to explore a topic I'm passionate about and develop valuable university skills like researching, essay-writing and referencing."

However, a traditional university degree is only one pathway available to young people, and we work equally hard to support those looking for apprenticeships or employment opportunities. All our students are strongly encouraged to engage in meaningful work experience and we enjoy good links with local employers and organisations in the town to help in this respect. We work with local Rotarians and other professionals so that during their time at BCS students can experience mock interviews and are given invaluable advice in preparation for university, apprenticeship and employment applications.

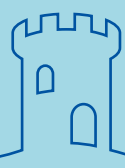




KEY TERMS!
BREAKEVEN OPERATIONS
PROFIT
REVENUE OUTSOURCING
BUSINESS SHARE CAPITAL
PROMOTION PRICE
COST LIABILITY
ECONOMY CAPACITY
STAKE HOLDER TURNOVER
HUMAN RESOURCE
ELASTICITY
INTEREST
CASH

BUSINESS STUDIES
company profiles
RAC SYSTEMS
Virgin
London
BRAIN RESEARCH

“ Students feel confident in making decisions about further education, training and careers. ”



OFSTED



Beyond the classroom



We seek to develop well-rounded students who leave us having broadened not only their horizons, but their skill sets. Being able to cook a decent meal on a budget; read a map; make good choices on a night out; administer CPR; apply for student finance and understand a wage slip are just some of the skills we teach our students.

Enrichment opportunities include the Duke of Edinburgh scheme (Bronze or Silver), sports activities, first aid qualifications, volunteering at local events such as the Buxton Fringe, mentoring schemes with lower school students and supporting other students with paired reading or similar schemes.


All students have the opportunity to broaden their academic interests too with the Extended Project Qualification. As well as counting towards university entrance points, this qualification allows students to follow personal interests that might support their chosen subjects but might equally be completely unrelated. Students following this programme get academic support and guidance from our Learning Advisor but have to develop real initiative and independent motivation.

Trinite "I studied the L3 Health and Social Care Extended Diploma, and part of this course was doing 100 hours of work experience. I got involved with working with EMH Care and Support and Connex Community Sport. Working with EMH really helped me to understand what it is like to work with people with physical and learning disabilities and I loved the service users and staff. Volunteering at Connex, a befriending service involved organising a fortnightly get together with more senior members of our community who maybe don't have family. They would come into school and we would play games, do quizzes and enjoy having a cup of tea and a chat. Having the chance to work with these organisations and getting to meet all these new people has been amazing and has equipped me with skills I didn't know I had but will definitely utilise in the future."



Josh "We did a workshop session in Sixth Form about how to stay safe at university that was delivered by a charity called 'Change, Grow, Live'. They work with young people to help them with lifestyle choices around drugs, alcohol, health and wellbeing. As a consequence, I became part of an advisory group for them and attended workshops where we worked with researchers from Middlesex University to gather data about health education. I am continuing my work with CGL and am now a paid ambassador!"





**“ Parents are positive and told us
‘teachers go above and beyond,
and inspire’ ”**



OFSTED



Looking after you

Coming to Sixth Form is an exciting new step but there will be times when you'll need extra support with your work or personal life. Students are grouped into relatively small tutor groups, so each tutor can really get to know each student and become an important mentor to them.

Activities are organised to ensure that all students, wherever they took their GCSEs, get to know each other and staff really well. Tutors have a programme to deliver in tutor time, but the experience of being in a Sixth Form tutor group is very different from what students have experienced so far in school and we foster a strong sense of belonging through fun inter-form competitions and group discussions and debates often over a cup of tea and a biscuit.

Tutors, our Pastoral Manager Mr Lomas, our School Counsellor Debra McDonald-Webb and myself all work together to guide and help you through life's ups and downs and we are able to point you towards other services who can help if needed. We also offer a bursary for some of our students who might need financial help to buy school supplies, textbooks, pay for trips etc. Further details of this scheme can be found on our website.



Miriam "As part of the enrichment programme, I studied L3 Music Performance alongside my 3 A levels and EPQ. This enabled me to continue my love of music and get an extra qualification which also carried UCAS points. I worked with other Sixth Formers as part of an ensemble and it was brilliant to collaborate with other musicians and give a live performance.



I also spent a lot of my time at BCS Sixth Form working in the Hub as an assistant to the librarian. This gave me a lot of responsibility and I really enjoyed working with younger students and helping nurture a love of reading. The Hub was also a great space in which to study as it has a calm and quiet atmosphere – perfect for revision."



Admissions

Our minimum entry criteria is 5 GCSEs from grades 4 - 9 including English and Maths. In some circumstances, we do however offer students the opportunity to re-sit either English and Maths if they haven't achieved a strong pass in one of these subjects.

It is important that you choose subjects that you enjoy, have an aptitude for and will achieve success in. We will offer you advice about good subject combinations and what subjects you might need to study in order to pursue certain career pathways. Some subjects require you to have already studied the subject and achieved a certain grade. Please see the table below for further information:

Subject	Entry criteria
A level Art	GCSE grade 5
A level Biology	GCSE grade 6 + GCSE Higher Maths paper
A level Business Studies	
A level Chemistry	GCSE grade 6 (triple or combined science)
A level Computer Science	GCSE grade 5 in Maths
A level Design & Technology	
A level Drama & Theatre	Grade 5 in English
A level English Language	GCSE grade 5
A level English Literature	GCSE grade 5
A level Film Studies	
A level French	GCSE grade 5
A level Geography	GCSE grade 5
L3 Health & Social Care	
A level History	GCSE grade 5
L3 Applied Human Biology	GCSE grade 5 in Biology or 55 in Combined Science
L3 Information Technology	
A level Maths	GCSE grade 7
A level Further Maths	GCSE grade 8
L3 Music	Ability to play an instrument
A level PE	
A level Philosophy & Ethics	Grade 5 in English
A level Physics	Grade 6 in Physics or 66 in trilogy + grade 6 in Maths
A level Psychology	Grade 5 in Maths and English
A level Sociology	





“The school works hard to broaden students’ understanding of life beyond Buxton ”

OFSTED



What students and parents say:

“ I feel like I really developed as a person because of BCS Sixth Form. I came into year 12 very shy and lacking a lot of confidence in my abilities. My teachers helped me so much to reach my potential and motivate me to work harder than ever. All of the Sixth Form staff are lovely and make you feel so safe and secure. I was very conflicted about applying to university but Ms Cruse and the other teachers gave me tons of advice which led to me deciding on a degree that I now can't wait to start! I'd love to go back and do it all over again because the experiences I had here were so special & definitely ones I'll remember for a very long time.” RACHEL

“ BCS Sixth Form provides the opportunities to do so many things – whether subject related or not .”
TOM

“ Sixth Form for me was a bit of a roller coaster, there were ups and downs throughout, however the one constant was the unconditional support from the staff. Being a part of BCS Sixth Form was a really enjoyable experience, the atmosphere was wonderful and everyone, both staff and students, were lovely people who all helped each other on their journeys. The A Level lessons were always well planned, informative and enjoyable. However, this is also a place to learn about yourself and grow as a person. I feel my whole year group achieved this as a result of the incredible staff who put so much effort into making BCS Sixth Form a great experience for everyone who attends. Being part of this sixth form really changed me as a person, for the better, and I will always remember my time here.” OLIVIA

“ I couldn't think of anywhere better to do my A Levels. The staff and other students are all so welcoming and friendly. The sixth form team encourage us to get the best results we can whilst making sure we have the most memorable two years possible.” ELLIE

“ We were thrilled with our daughter's exceptional A Level results but also amazed at the rounded, compassionate adult she grew in to during her time at Buxton's Sixth Form. The combination of committed teaching, warm collegiate atmosphere and outstanding pastoral care is a winning formula – we've seen what it can deliver and recommend it very highly.”
NELL'S MUM

“ When I came to BCS Sixth Form, I didn't know anyone, but the friendship and support I got was overwhelming. It is an extremely welcoming space to learn in and made me feel very safe. I found lots of the teaching techniques really helpful and interesting, including many which helped to combat exam stress. The teachers are easy to communicate any feelings to. The help I received in and out of lessons was excellent and the teachers and staff were eager to offer support and help with any issue I had.” POLLY

“ The Sixth Form staff are amazing teachers who really look after their students, I can honestly say these are the best teachers I have ever come across. I know Lauren has not been the easiest person to teach but how they have been with her and encouraged her has been exceptional, they never gave up! Additionally, I really can't thank this team enough for the support they have given me as a parent – they are an absolute credit to school.”
LAUREN'S MUM



Fine Art A LEVEL - AQA

Brief course overview including entry requirements and how the course is assessed:

A-Level Art is primarily focused around Fine Art, building your skills in painting and drawing, however there is the freedom to build this course around your own particular interests and skills, such as sculpture, photography and digital art.

We would encourage anyone considering A-Level Fine Art to have a minimum of a grade 5 at GCSE, but more importantly, have the resilience and patience for a course of this nature.

The course is very similar to GCSE although provides more opportunity for choice and direction. The assessment is very similar, but does also include a written aspect.

Where this course could take you:

We have had students go on to study at some of the best Art institutions in the world including:

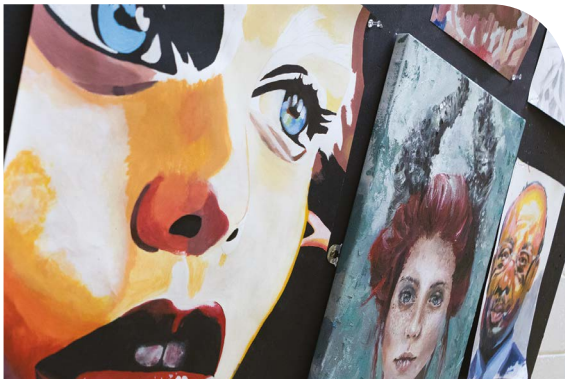
Lucy - UAL: Central St Martins

Abbie - UAL: Chelsea College of Art

Nina - University of Leeds

Annie - Manchester School of Art

Eliott - Oxford University

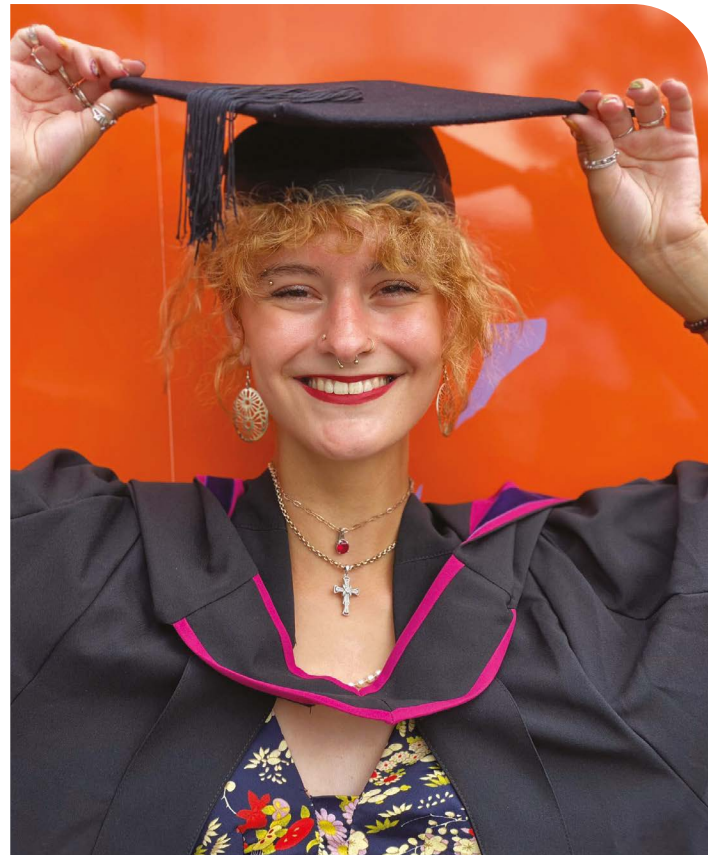


What our students say about Art:

"I have loved going to art lectures as a group and working around our big table collaborating on large scale pieces"

"It's what I'm passionate about and it's easy to get ideas flowing with the support of my teacher"

"I really enjoy the independence and being able to explore my own ideas and experiment with new materials and ways of working."



Biology A LEVEL - AQA

Brief course overview including entry requirements and how the course is assessed:

Biology A level builds on the animal and plant Biology studied at GCSE. You will study key biological areas in depth, such as Biological molecules, Cells, Immunology, Physiology, Genetics and Metabolism.

The course is externally assessed at the end of the course. Students sit three papers which contain a range of questions, including a synoptic essay.

You must achieve a grade 6 or higher to study Biology A level and have taken the higher Mathematics GCSE.

<https://www.aqa.org.uk/subjects/science/as-and-a-level/biology-7401-7402>

Where this course could take you:

This course could lead you to study a range of Scientific based degree courses such as:

- Medicine
- Veterinary Science
- Pharmacy
- Biological Sciences
- Nursing
- Midwifery
- Radiology
- Natural Sciences
- Ecology
- Marine Conservation



What our students say about Biology:

"Teachers break down the content into manageable chunks - I rarely feel out of my depth or overwhelmed with the things we learn in lessons"

"It's challenging which means it's fulfilling when I finally understand something"

"We are given lots of feedback after doing exam style questions and I feel ready for the external exams."



Business A LEVEL - AQA

Brief course overview including entry requirements and how the course is assessed:

With a focus on helping you to become a good decision maker, you'll learn essential managerial skills, alongside techniques to help you become an analytical problem solver. These skills are all highly sought after and valued in a wide range of careers.

Year 12

An introduction to key business areas: marketing, operations, finance and human resource management. This includes a special focus on decision making – particularly how decisions made in one area can affect the rest of the business.

Year 13 An investigation of the strategic decisions that all businesses have to make.

www.aqa.org.uk/subjects/business

Where this course could take you:

If you'd like to study business, finance or management at university, A-level Business provides an excellent foundation. The skills you learn are transferable across a broad range of subjects and careers. Whatever you choose to do in the future, you'll find that the things you learn in this course will help. For example, you'll probably work with lots of different people, so knowledge of motivational theory will help you to work well with others and help them achieve their potential. You might have ambitious plans to start your own business. If that's the case, you'll find the marketing and finance topics particularly useful.

What our students say about Business:

"Business teaches you transferable skills which you can then use in other subjects."

"Mr Ward will give you the time to understand concepts you don't understand."

"Business relates to any job you have in the future."

"Lessons are very varied; it is not always note taking."

"I feel well prepared for my exams."



Chemistry A LEVEL - AQA

Brief course overview including entry requirements and how the course is assessed:

Chemistry is a central science that combines Biology, Physics and Maths to explain the physical world around us. You will learn concepts from organic, inorganic and physical chemistry, such as the role of carbon in carbon-based lifeforms, chemical reactions and the fundamental role of atoms. It will teach you to analyse, theorise and apply concepts, allowing you to develop important critical skills for use in future learning.

The entry requirements are a minimum of a 6 at GCSE (Triple Chemistry, or Combined Science).

Where this course could take you:

- Analytical, Formulation, Medicinal or Process Chemist
- Biotechnologist
- Chemical Engineer
- Drug Discovery and Chemical Industries
- Environmental, Forensic or Materials Scientist
- Food Technologist
- Geochemical Engineer
- Medicine (Doctor)
- Nanotechnologist
- Pharmacologist
- Science Writer
- Scientific Laboratory Technician
- Teacher
- Toxicologist
- Veterinary Science



What our students say about Chemistry:

"It is a challenging and very interesting subject."

"Tests are marked quickly and content is taught well."

"I like how the content is split between two teachers."

"I have enjoyed completing lots of Chemistry practical lessons."



Computer Science A LEVEL - OCR

Brief course overview including entry requirements and how the course is assessed:

- Computer science is a dynamic and rapidly growing area that has become an integral part of the world that we live in today. Expertise in computing enables you to solve complex, challenging problems. Computing enables you to make a positive difference in the world. Computing offers many types of lucrative careers.
- Two exams – Computer Systems (40%) 2 ½ hours, Algorithms and Programming (40%) 2 ½ hours
- Programming Project (20%)
- Entry requirements = GCSE Computer Science – Helpful, but not compulsory, Maths GCSE minimum Grade 5, but higher would be advantageous

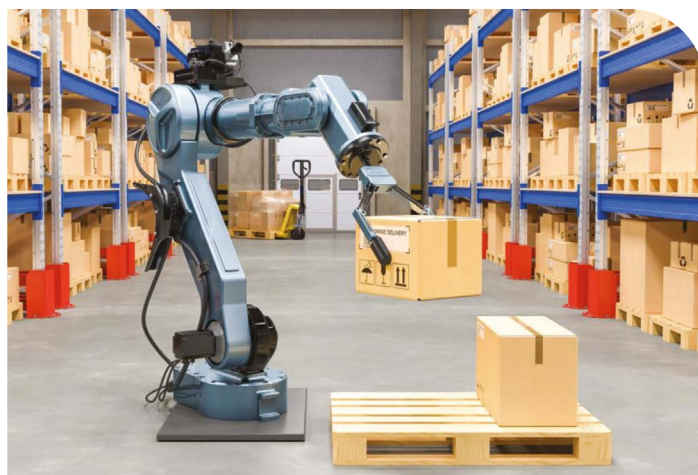
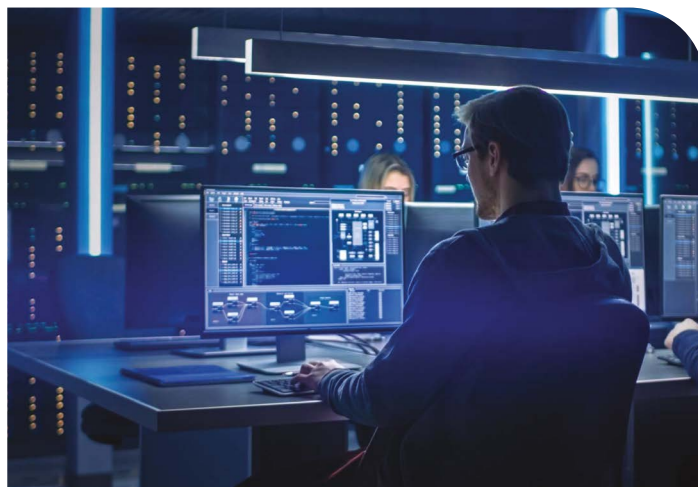
Where this course could take you:

A level Computer science is naturally a strong subject to take if you wish to go on to do computer science at degree level, and although most computing-based degree courses don't require Computer science A level there are a number of software engineering courses which do. There are also other degree courses such as information technology and information systems which will be served well by a Computer science A level.

Computer science could lead on to robotics, artificial intelligence, machine learning, cloud computing, big data processing, networking, ethical hacking, computer game development, home automation or even teaching

What our students say about Computer Science:

"I enjoy programming and being able to create and develop the programs so that they are more complex. Learning about the different types of cyber crimes and how they can be countered or prevented is also an extremely interesting topic to me."



<https://www.ocr.org.uk/qualifications/as-and-a-level/computer-science-h046-h446-from-2015/>



Design and Technology A LEVEL - AQA

Brief course overview including entry requirements and how the course is assessed:

This creative and thought-provoking qualification gives students the practical skills, theoretical knowledge and confidence to succeed in a number of careers, especially those in the creative industries.

Students investigate historical, social, cultural, environmental and economic influences on design and technology, whilst enjoying opportunities to put their learning in to practice by producing prototypes of their choice. Students will gain a real understanding of what it means to be a designer, alongside the knowledge and skills sought by higher education and employers.

The course is assessed through 1 major design and make task and 2 written exams. 50% Non Examined Assessment, 30% Technical Principles and 20% Designing and Making Principles.

aqa.org.uk/designandtechnology

Where this course could take you:

Our students have gone on to many exciting careers including:

- Engineering Apprenticeships
- Robotics Apprenticeship with Amazon
- Architecture
- Otter Control – Electrical Engineer
- Fibracon Apprenticeship
- Brunel Product Design
- Nottingham Trent – Product Design
- Loughborough – Industrial Design
- Interior Design
- Jewellery Design
- Tarmac Higher Level Apprenticeship
- Liverpool Music Production
- Armed Forces Engineer

What our students say about Design and Technology:

“Over the past two years I have developed a strong foundation in both traditional and contemporary design and manufacturing techniques, the free reign tutors provided when it came to our final projects.”

“I enjoyed having the freedom to mix electronics into the design process to create something truly unique.”

“I switched to Technology and it has been one of the best decisions I have made. The freedom to choose what you want to make suits me as a learner, and making mistakes and learning as you go is one of the best ways to learn.”



Drama and Theatre

A LEVEL - WJEC EDUQAS

Brief course overview including entry requirements and how the course is assessed:

A Level Drama and Theatre is an exciting and inspiring course which will provide you with the opportunity to work as either a performer and/or designer and you will have the opportunity to learn and develop a range of transferable skills including analytical, problem-solving, organisation and time-management competencies.

Component 1: Theatre Workshop NEA - 20%

You create an original interpretation of an extract of a play text, applying a style of theatre that you have learnt. There is an accompanying written log.

Component 2: Text in Action External Visiting Examiner – 40%

You create 2 performances, one is devised from a stimulus the other is an extract from a play text. You apply different performance styles to each performance. There is an accompanying written process log and evaluation.

Component 3: Text in Performance – Written Exam – 40%

You answer a series of questions based on set texts you have studied. You will need to think about the texts from the point of view of designers, directors and performers.



Where this course could take you:

The possibilities are endless!

Drama will enable you to demonstrate many skills which employers, colleges and universities will be looking for. It can also give you opportunities to travel, meet people and get the most out of life.

Past students who have taken this course have gone on to study a wide range of different subjects at university such as: Theatre, Art, History, Law, Psychology, English, Film and Mathematics.

What our students say about Drama and Theatre:

"It's enjoyable, you get to know people and yourself."

"You work on different ideas of stage craft, not just performing."

"It was brilliant – worked really well with English and Film A Level."

"Fun, even though it is hard work and demanding"

"It was the best ever!"



English Language A LEVEL - OCR

Brief course overview including entry requirements and how the course is assessed:

English Language A Level allows you to immerse yourself in the beauty, complexity and intricacies of the English language. We grapple with modern day issues such as language and gender, explore how the media positions us daily, and how politicians exploit language and utilise power strategies in their campaigns. We also study how children acquire language, investigate how our language has changed over time, and the impact that technology has had on the way we communicate.

The A Level is assessed as follows:

Paper 1: Exam - Exploring Language (40%)

Paper 2: Exam - Dimensions of Linguistic Variation (40%)

Non-Exam Assessment (NEA): An investigation into an area of your own interest which allows you to develop your knowledge beyond the specification. (20%)

We require a grade five in English Language at GCSE.

Where this course could take you:

Potential University Courses:

- BA (Hons) English Language
- BA (Hons) Linguistics
- PGCE Secondary English
- BA (Hons) Primary Education
- BSc (Hons) Speech and Language Therapy
- BA (Hons) Politics and International Relations
- BA (Hons) Creative Writing
- BA (Hons) Journalism

Potential Careers:

- Teaching
- Writing (incl. journalism)
- Midwifery
- Speech and Language Therapy
- Editor
- Publishing
- Public Relations Manager
- Social Media Manager

What our students say about English Language:

"English language is an enjoyable subject to study as it gives us a wider understanding of the world around us, as well as showing the huge impact language has on our daily lives. The lessons are always fun and laid-back whilst being informative."

"English Language allows for innovative ideas, as there are no limitations - you have freedom."

"I really like English language as I find it super interesting. We get to look at how language affects the world around us and it makes you realise how everyone uses English in different ways. I find the subject very enjoyable and fun to learn about."



English Literature A LEVEL - AQA

Brief course overview including entry requirements and how the course is assessed:

The course consists of two exam papers and a non-examined module (NEA). Each exam paper is worth 40% of the overall marks and the NEA makes up the other 20%.

The first exam paper, 'Love Through The Ages' asks you to explore the presentation of a diverse range of relationships through the study of a Shakespeare play, an anthology of poems, and a prose text.

The second paper, 'World War I and its aftermath' requires the study of one prose text, one drama text and an anthology of poetry, all of which explore the impact and aftermath of World War One.

In addition to these exam components, you will have the opportunity to conduct a comparative critical study of two texts, one of which must have been written pre-1900.

For entry on to this course, you are required to have gained at least a Grade 5 in Literature at GCSE.

Where this course could take you:

The results our students achieve in Literature have enabled them to study at a range of institutions including: Cambridge, Oxford, Glasgow, Leeds Manchester; Newcastle, Nottingham, Cardiff and Central St Martin's.

English Literature is a highly regarded A Level both in terms of accessing higher education and also potential careers. Students who have studied Literature with us have gone on to post-graduate study and work in: Publishing, lecturing, teaching, local government and the public sector, law and the media.



What our students say about English Literature:

"Great for debate and consideration of opinions."

"The content is amazing – really varied and there's something for everyone."

"Teaching is engaging, provides well structured lessons and effective feedback."

"A really interesting range of texts studied for both exam papers and the NEA."

"Helps me improve essay writing skills which are of benefit across all subjects."

"Learning about the context and the impact on a text is fascinating."

"The opportunity to consider the world through the eyes of writers is really interesting."



Film Studies A LEVEL - WJEC/EDUQAS

Brief course overview including entry requirements and how the course is assessed:

A level Film Studies will change the way you watch films forever! You will study 11 films from a variety of different genres and eras, alongside a selection of short films. You will gain an appreciation of film as an art form and an insight into the technical aspects of filmmaking. It will challenge you to think in new ways, question your perspective on issues such as representation of race or gender and explore important issues within history, society and culture. You'll learn new skills and even produce your own practical production. A level Film Studies comprises 3 components:

Component 1: Exam - Hollywood 1930-1990, American Film and British film (35%)

Component 2: Exam - Global, Documentary, Silent and Experimental Film (35%)

Component 3: NEA – make your own short film or screenplay with digital storyboard (30%)



Where this course could take you:

- Studying film can lead to practical jobs in the media industry such as: filmmaking, directing, producing, editing, lighting, sound engineering, casting, location scouting... the list is endless!
- BBC, Sky, ITV and C4 all offer film apprenticeships, both creative and technical.
- You could go on to further academic study; film has been studied at university for over 50 years and even Oxford and Cambridge offer courses in Film Studies and Screen Arts
- Former film students now work in advertising and marketing, run their own film companies, and one is even a producer on Coronation Street!

What our students say about Film Studies:

"Above all, film was another way for me to express my creativity. I loved being introduced to new directors and incorporating their styles and techniques into my own films."

Cameron, currently studying film production in Leeds

"The film teachers are amazing and really supportive. I found structuring my essays quite hard, but with their help I was able to write about complex issues and ideologies."

Ellie, studying Film and Television at York St John

"Until I started film I had no idea what I wanted to do with my life. Film has given me so much: enjoyment, confidence, self-esteem, and has made me realise that this is something I love and want to build a career in."

Alex, now in Sheffield studying film



French A LEVEL - AQA

Brief course overview including entry requirements and how the course is assessed:

A Level French will help you build your fluency and accuracy in the language to a very high level. You will acquire a broad vocabulary whilst you explore French grammar and culture through studying a range of topics and also analysing an original French film and novel.

Paper 1: Listening/ Reading/ Translations

Paper 2: One essay on the book and one essay on the film

Paper 3: Speaking: one stimulus and individual research project

Entry requirements: Grade 6 at GCSE French

Where this course could take you:

The highly respected ability to use multiple languages is beneficial for any route you take after Sixth Form.

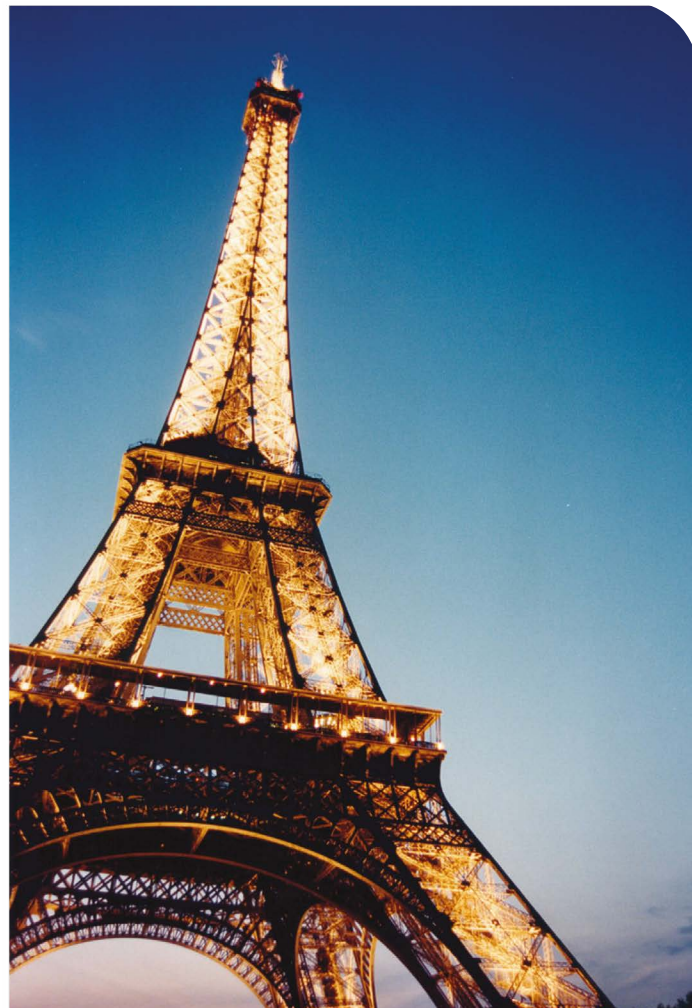
French can lead to a wide range of opportunities at university and in employment, both in this country and abroad, even leading to study or work in a French-speaking country.

Former French students now work in Law, Travel and Tourism, Translation, Business, Marketing, and Education.

What our students say about French:

"I have loved expanding my knowledge not just of France and Francophone countries but of the world in general."

"I have gained so much confidence speaking the language and would now feel ok to have a conversation with a French person!"



Geography A LEVEL - PEARSON

Brief course overview including entry requirements and how the course is assessed:

In 2015 The Guardian newspaper identified geography as the 'must have A-level' and this course covers both human and physical geography taught by two specialists who deliver the content equally. The following topics are taught: The Water Cycle and Water Insecurity. The Carbon Cycle and Energy Security. Tectonic Processes and Hazards. Coastal Landscapes and Change. Globalisation. Regenerating Places. Superpowers and finally, Global Development and Connections with a focus on Health, Human Rights and Intervention.

There is an NEA requirement for the course which, when completed, is worth up to 20% of the final grade. In order to support the completion of this, students undertake a 5-x day residential at the start of Year 13. Fieldwork plays an integral part of the course but does come at a cost of approx. £300 which needs to be considered when choosing this as an option.

<https://qualifications.pearson.com>



Where this course could take you:

Geography is a multidisciplinary A-Level covering topics such as climate change, urbanisation, changing demographics, GIS and weather systems. Geographers acquire and develop a range of skills that allow them to study and work across the range of physical and social sciences.

Ex BCS Geographers have gone on to study degrees in:

- Archaeology
- Geography
- Politics
- Business
- Marine Biology
- Law
- Environmental studies
- Engineering

What our students say about Geography:

"Relevant, topical, interesting content about the world we live in"

"The physical geography aspect of the course is fascinating"

"Going on out first ever fieldwork to Formby beach was a real highlight for me"

"Lessons are very interactive and we are encouraged to research widely and be independent learners"



Health & Social Care LEVEL 3 - EXTENDED CERTIFICATE

Brief course overview including entry requirements and how the course is assessed:

The events of the last few years have highlighted what an important role the NHS and other health providers give to our community, not just in Buxton and the High Peak but globally! The BTEC Level 3 course is assessed through a mixture of external examinations and internal coursework.

We offer the Extended Certificate in Health and Social Care which is equivalent to 1 A Level and is a broad basis of study for the Health and Social Care sector. It could be taken alongside other subjects such as Psychology, Biology, Sociology or History.

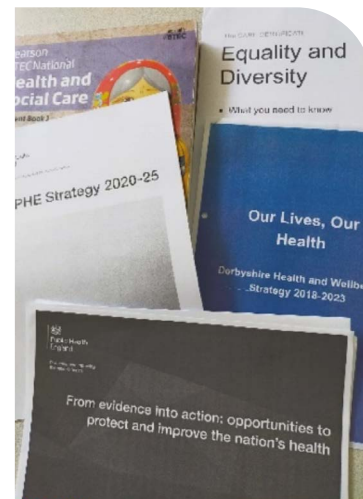
We also offer the Extended Diploma in Health and Social Care which is equivalent to 3 A Levels. This is designed as a 2-year course that is specifically for those who want to progress to a health-related degree or apprenticeship.

Entry requirements: 4 in GCSE Maths and English

<https://qualifications.pearson.com/en/qualifications/btec-nationals/health-and-social-care-2016.html>

Where this course could take you:

The Extended Certificate can lead to apprenticeships, employment and is also recognised by higher education institutions as contributing to meeting admission requirements to many relevant courses in Health and Social Care and beyond - for example degrees in Nursing, Social Work, Physiotherapy, Occupational Therapy, Speech Therapy, Radiography, Midwifery and Nursing, Paramedic Science, Podiatry, Healthcare Science and the NHS Practitioner Training Programme.



What our students say about Health & Social Care:

"Very interesting, the teachers make it fun for us."

"It is not as stressful doing coursework and better for me than doing lots of exams."

"A large amount of the things I learn I can apply to the outside world."

"Learning about the lifespan development was really good and I learnt so much about how children develop."

"I really enjoy the anatomy and physiology as it is really interesting."

"The teachers are really nice and supportive!"



History A LEVEL - AQA

Brief course overview including entry requirements and how the course is assessed:

Studying A Level History will provide you with the opportunity to study how American developed into a Superpower, 1865 – 1975 alongside The Making of Modern Britain, 1951 -2007. These two units will make up 80% of your overall grade and be assessed by a mixture of extended essays, source, and interpretation questions. Furthermore, students will complete an NEA on the witchcraft craze in Europe, 1560 – 1660.

To be successful at A Level History we advise students to achieve at least a grade 5 at GCSE. If you haven't studied GCSE history, then a grade 5 in English Language is preferable.

Where this course could take you:

As a facilitating subject, history equips students with the skills and attributes to succeed in a wide range of careers. In the last few years our students have gone on to study law, politics, international relations, business and economics and journalism.

Elliot and Connie (right) both went on to study History at Oxford University.

Due to the communication skills, improved oracy, ability to interpret a range of evidence and write with confidence that our students gain, a history A Level opens many opportunities for the future.

What our students say about History:

"I have loved studying about the Making of Modern Britain and learning how our history has been shaped over the past 50 years."

"My political understand has improved and I now have a far keener interest in how different countries are governed."

"I have found that I am able to use knowledge gained studying GCSE history but that we now study them in much more depth."

"It's not as hard as I thought!"



Applied Human Biology

BTEC LEVEL 3 NATIONAL CERTIFICATE - PEARSON

Brief course overview including entry requirements and how the course is assessed:

The entry requirements are a 5 in triple Biology or a 55 in Combined science.

The units you will study are:

Unit 1: Principles of Applied Human Biology

Unit 2: Microorganisms and Infectious Diseases

Unit 3: Human Biology and Health Issues

Optional unit – one of the following:

- Functional Physiology
- Diseases, Disorders, Treatments and Therapies
- Genetics and Genetic Engineering
- Biomedical Science
- Human Reproduction and Fertility

Units 1 and 3 are externally examined and Unit 2 and the optional unit are coursework which is internally assessed by your teachers.

<https://qualifications.pearson.com/en/qualifications/btec-nationals/applied-human-biology.html>

Where this course could take you:

In this qualification you will study applied human biology which forms the foundation of the health and health science sectors. The sectors are wide-ranging, including, for example, nursing, midwifery, allied health and sciences including life sciences, clinical biomedical sciences and physiological sciences.



What our students say about Applied Human Biology:

"This course is much more relevant for me and I like that we are just learning about Human biology and not having to study animals and plants"

"The practical side of the course is fascinating"

"I'm happy that this course has a non-exam element as this suits my way of working"



Information Technology BTEC LEVEL 3 - EDEXCEL

Brief course overview including entry requirements and how the course is assessed:

- Study a range of new packages and learn skills in them really fit for higher education or the world of work
- Have the opportunity to study 'Social Media' and 'Spreadsheet' coursework, which is Internally assessed
- 2 exams – One theory paper 2 hours long (can retake once), One practical 5 hour exam split over two days to make an online database
- No specific entry requirements, but resilience and hard work will help students gain a good overall grade
- Graded as Level 3 Pass, Merit, Distinction, Distinction* which hold UCAS tariff points

<https://qualifications.pearson.com/en/qualifications/btec-nationals/information-technology-2016.html>

Where this course could take you:

Ebony - Business & IT

Dan - Business and Economics

Amy - Secondary ICT Teacher

Abbie - Computer Forensics

Chad - Cyber Security

What our students say about Information Technology:

"Loved the Social Media project, really relevant and interesting"

"I liked learning new skills making Spreadsheets and Databases & feel I've developed skills for life"

"I have really enjoyed the theory"

"I like the balance of coursework and exams"



Mathematics A LEVEL - AQA

Brief course overview including entry requirements and how the course is assessed:

A level Mathematics extends GCSE Maths and introduces new ideas

Pure maths underpins everything and you will be introduced to some of the big ideas in mathematics such as calculus (differentiation and integration).

Also you will look at two of the main applications of maths, Statistics and Mechanics.

Assessment: Three 2 hour examinations at the end of Year 13

Entry requirement: Grade 7 in GCSE Mathematics

<https://www.aqa.org.uk/subjects/mathematics/as-and-a-level>

Where this course could take you:

Where Maths has taken our past students and could take you!

A-Level Mathematics is rigorous and is well-respected by employers and higher education institutions.

It will help you develop key employability skills e.g. problem solving, communication, logical reasoning and resilience.



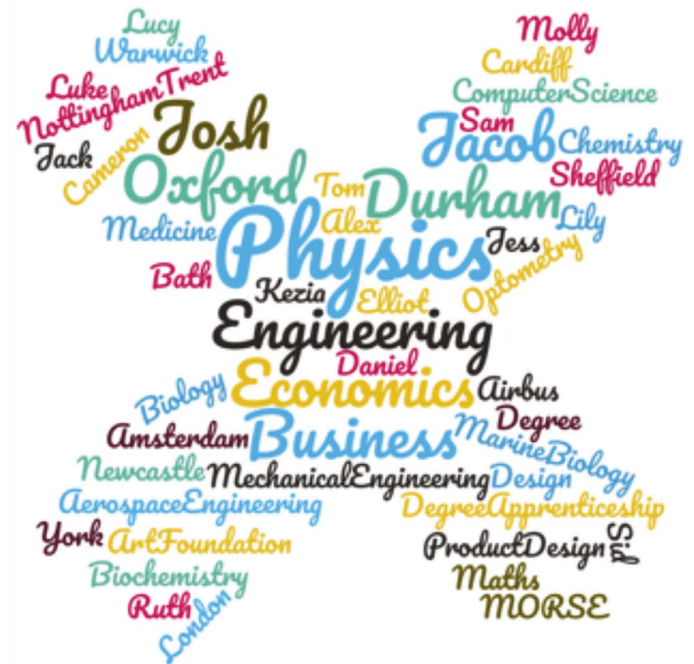
'Sixth Formers pictured with Marcus du Sautoy'

What our students say about Mathematics:

"This year I have really enjoyed maths. I think it has been a challenge for me, which I needed. It has made me think more and more logically. I especially enjoyed Mechanics! Maths is a great subject choice and will help you further in life."



"I enjoy Pure maths and also learning about some of the maths behind simple things"



Further Mathematics A LEVEL - AQA

Brief course overview including entry requirements and how the course is assessed:

Entries in England for A-Level Further Mathematics have risen rapidly in recent years. Young people recognise that it's a highly desirable qualification that can help them achieve their aspirations for further study and their future career.

Studying A-Level Further Mathematics is excellent preparation for many degrees such as mathematics, physics or engineering. Many university maths departments encourage students to take Further Mathematics at A-Level as it introduces a wider range of pure and applied content, such as matrices and complex numbers. Students who have studied Further Mathematics often find the transition to university far more straightforward.

In Further Mathematics you will build on your learning in A-Level Mathematics.

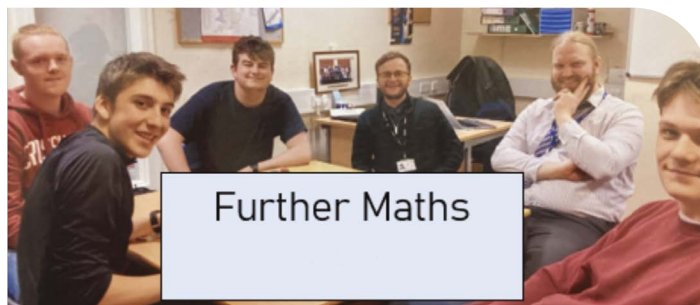
You will study:

- Further Pure Mathematics
- Further Mechanics
- An introduction to Discrete Mathematics

Assessment: Three 2 hour examinations at the end of Year 13

Entry requirement: Grade 8 in GCSE Mathematics and to be studying A-Level Mathematics

<https://www.aqa.org.uk/subjects/mathematics/as-and-a-level/further-mathematics-7367>



Where this course could take you:

Our past students have gone on to study rigorous courses at top universities or even higher level apprenticeships. These include:

- MORSE (Mathematics, Operational Research, Statistics and Economics) at Warwick University
- Physics at The University of Bath
- Mathematics at The University of Lancaster
- Economics at The University of Oxford
- Robotic Engineering at The University of Liverpool
- Apprenticeship with Amazon

What our students say about Further Mathematics:

"Further Maths has been both challenging and incredibly rewarding. It has only made me like maths more"



Music

BTEC LEVEL 3 - NATIONAL EXTENDED CERTIFICATE

Brief course overview including entry requirements and how the course is assessed:

Mandatory Units (students complete all 3)

1. Practical Music Theory and Harmony: Internally Assessed:
Students study a comprehensive range of the standard musical vocabulary and through practical 'real industry style tasks demonstrate their understanding'
2. Professional Practice in the Music Industry: Externally Assessed
– Students study the expectations of someone involved in the Music Industry including financial planning and bid preparation. They sit a controlled assessment set by Pearson in the second year of the course.
3. Ensemble Music Performance: Externally Assessed: In groups of between three and eight students choose from a list of repertoire and prepare a live performance to an audience. This will be recorded and assessed by Pearson.

Optional Units (Pick at least 1)

- Composing Music, Music Performance Session Styles, Improvising Music, Solo Performance

Where this course could take you:

- A Level equivalent with progression to apprenticeships or university
- A course that is focused on real work in the Creative Arts Industry
- A choice of pathways through the course
- The development of skills which promote the independence necessary in the work place
- Working with Music Industry professionals
- Working with other young musicians
- Trips to Live Music events



What our students say about Music:

Please note: this is a new course beginning in September 2022

<https://qualifications.pearson.com/en/qualifications/btec-nationals/music-performance-2018.html>



Physical Education A LEVEL - OCR

Brief course overview including entry requirements and how the course is assessed:

The A Level in Physical Education develops knowledge, understanding and skills relevant to physical education. Students gain understanding of the scientific and socio-cultural factors that underpin physical activity, and demonstrate their ability as either performer or coach.

The course is assessed by 3 examinations; Physiological factors affecting performance (30% of total mark), Psychological factors affecting performance (20% of total mark) and Socio-Cultural issues in physical activity and sport (20% of total mark).

The remaining 30% is made up of practical performance in ONE sport (15% of total mark) and evaluating and analysing performance for improvement (15% of total mark).

Where this course could take you:

The OCR A-Level in Physical Education is an ideal progression route to study undergraduate and postgraduate degree courses in Sports Science, Physical Education and Coaching etc.

Careers like teaching, physiotherapy, sports scientists, personal trainers are common destinations for students studying the qualification at BCS.

Recent examples:

Alex - London School of Osteopathy.

Tess and Kieran - qualified and practising physiotherapists in Manchester.

Jamie - teacher of Physical Education at Highfields School, Derbyshire.

Ben - USPGA Golf scholarship

Sasha - USA Soccer scholarship



What our students say about Physical Education:

"I like the cross over links to biology and feel like what I am learning will be useful for a career in physiotherapy"

"I really enjoy the analysis of sport as it helps to inform my own game"

"Teachers give us handy booklets to work from which makes it easier for us to revise and organise ourselves"



Philosophy & Ethics A LEVEL - OCR

Brief course overview including entry requirements and how the course is assessed:

A Level Philosophy & Ethics (Religious Studies) provides a coherent and thought-provoking study into the philosophy of religion, the theory and application of ethics and deeper understanding and appreciation of theology. Learners will develop their skills of critical analysis in order to construct balanced, informed arguments and responses to philosophical, ethical and religious ideas.

The course is 100% exam-based assessment, with the final exam comprising of three 2-hour papers, each paper requiring you to write three essays on given topics.

It is required that A Level students of Philosophy have Grade 5 in English, due to the written demands of the course. Ideally, you will also have a GCSE in Religious Studies, though this is not essential.

Where this course could take you:

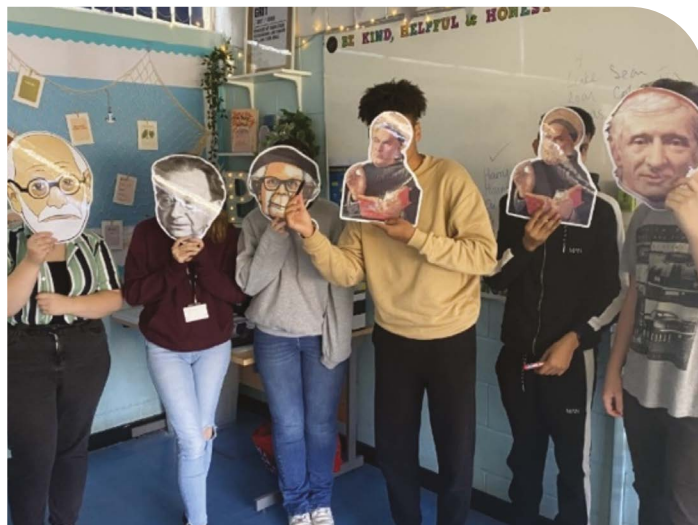
Studying Philosophy at university could open up many doors!

Philosophy careers include: Public Sector, such as NHS or police officer; Law, such as solicitor or barrister; Writing and Journalism; Humanitarian Work, such as UNICEF or United Nations; Politics, such as member of parliament, or Prime Minister... studying Philosophy teaches you the skills to excel in almost every field of study and work! In addition, approximately 90% of Philosophy graduates are in careers within 15 months of graduating, according to the Guardian online.

Employers say:

"If I need an employee who knows how to think, I'll look to the selection of Philosophy graduates."

"Good ethics is good business."



Famous Philosophy graduates include:

Moby (musician), Ricky Gervais (Comedian/Writer), General Sir Richard Barrons (Commander, Joint Forces Command), Martin Luther King Jr (Civil Rights Activist), David Cameron (Politician/PM)

What our students say about Philosophy & Ethics:

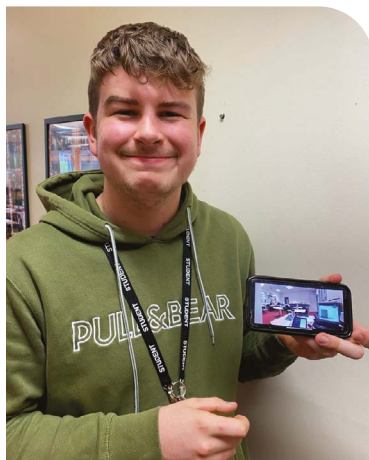
"To live is to think. Philosophy teaches you to do just this and more, to challenge ourselves in all our endeavours. If you like challenge, it's the subject for you. It is relevant to all other subjects and life in general. You won't regret it if you're keen on gaining some understanding of life and all that has been, is and will be. I am who I am today because of studying Philosophy... or am I just a brain in a vat?!" Justice Leach, Y13 2022

"Studying philosophy involved learning how to think critically, which transferred into both my other academic and creative subjects, and into life! I particularly enjoyed exploring debates about real world contemporary subjects and finding my own standpoint within essay writing, along with discovering the vast range of belief systems and ideologies both in the past and in today's world!"

Nell Darley, Y13 2022



Physics A LEVEL - AQA



Brief course overview including entry requirements and how the course is assessed:

All aspects of the modern world depend upon the understanding, analysis and interpretation of numerical problems; studying A Level Physics develops these highly transferrable skills and enables students of Physics to be able to thrive in a broad range of professional careers.

The course develops and extends the basic study of Physics undertaken at GCSE.

Year 12 focuses on particle physics, electricity, mechanics and waves.

Year 13 develops understanding of fields, nuclear and atomic physics, thermal physics, advanced mechanics and a selected option topic from: astrophysics, medical physics, modern physics, engineering physics and electronics. Year 13 also focuses on developing an ability to be able to tackle synoptic questions that integrate all parts of the syllabus.

Throughout the course practical and experimental skills and techniques are taught and assessed.

The entry requirements for the A Level Physics course are as follows:

- Maths GCSE: Minimum of a grade 6
- Trilogy Science GCSE: Minimum of a grade 6-6, or
- Physics GCSE: Minimum of a grade 6

www.aqa.org.uk/subjects/science/as-and-a-level/physics-7407-7408

Where this course could take you:

The study of A Level Physics provides an essential foundation and support for a great range of University courses including: engineering, architecture, various science courses, medicine, economics and computer Science.

The numerical problem-solving nature of Physics A Level also provides a good foundation for an increasing range of Degree Apprenticeships which allow a direct route into paid industry employment whilst studying for a degree.

A Level Physics best suits students who have a curiosity and determination to understand how the world works. To be successful you need to enjoy complex problem solving and be able to use both logical thinking and mathematical tools and techniques.

What our students say about Physics:

In the last couple of years students completing A Level Physics have gone on to study degree courses and degree-level apprenticeships including:

- Physics degrees, including Astrophysics and Cosmology at top universities around the country including Lancaster, Leeds and Bath
- Maths degrees at top universities including Cambridge and Warwick
- A range of Engineering degrees including mechanical engineering, electronic engineering and mechatronics
- Degree apprenticeship in Robotics at Amazon
- Degree apprenticeship in Laboratory Science at AstraZeneca.



Psychology A LEVEL - AQA

Brief course overview including entry requirements and how the course is assessed:

Psychology is the study of the human mind and human behaviour. Students have the opportunity to study a wide range of topic areas such as, memory, psychopathology, biopsychology and approaches. In Year 13 students can further their knowledge through topics such as forensics and schizophrenia. This A Level is assessed through three, 2-hour exams at the end of Year 13.

Students do not have to have studied the GCSE to study A Level psychology, however it is important to note that 20% of the course is based on research methods which requires a secure mathematical and scientific understanding.

We require a pass at GCSE or a minimum of grade 5 in all core subjects; English, maths and science.

Where this course could take you:

Psychology prepares students for a range of degree options, from straight psychology to disciplines such as, clinical, educational, forensics, sports. Career pathways include many areas such as, mental health and counselling, social work, research, law, criminal justice, education, and business.

Ex- Psychology A Level student, Jasmine has just achieved a First class degree in Psychology from The University of Liverpool and is about to start her masters degree in Investigative and Forensic Psychology.

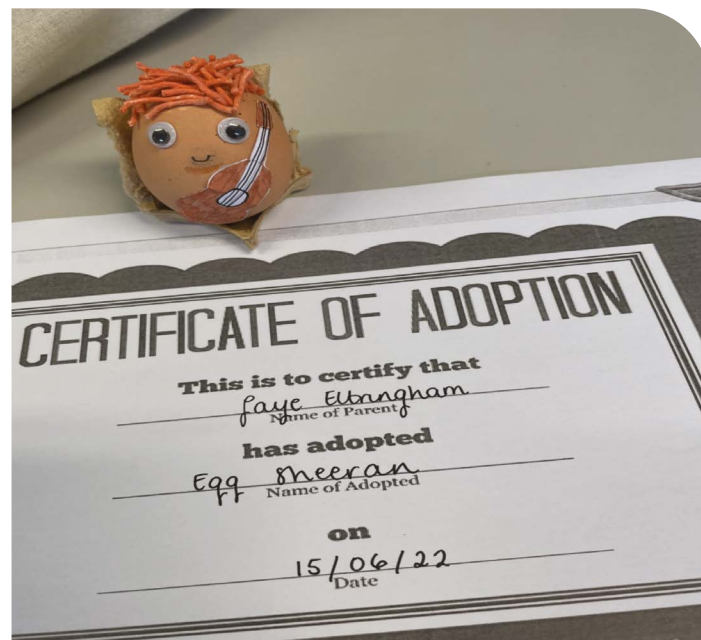
What our students say about Psychology:

"Some of the best and most interesting lessons I have had. My favourite subject by far!"

"Studying psychology at BCS has helped me realise my goal of becoming a psychotherapist and has prepared me for this journey in multiple ways."

"I find psychology very interesting, as personally the human brain and how it functions and how it explains certain behaviour and mindsets we have fascinates me. I feel like it can help you to better understand yourself and others which can potentially help in day to day life."

Students enjoy the egg baby project to understand how attachments form with infants and caregivers.



Sociology A LEVEL - AQA

Brief course overview including entry requirements and how the course is assessed:

Sociology is the study of social groups and social life in modern society. You will study a range of institutions such as education, family, media and crime. Sociology enables students to explore that things are not always what they seem with key questions such as: Why are the rich so rich? Are women now free to choose a career over a family? Why are stop and search rates so high in BME groups?

Sociology is assessed by three 2-hour exams at the end of Year 13. Sociology is an essay-based subject which requires students to write at length during the exams, this is why we require a minimum of a grade 4 in English.

Where this course could take you:

Sociology A Level will enable students to study a degree in sociology or open pathways for other areas such as: social sciences, anthropology, law and criminal justice, education.

Sociology prepares students well for many careers such as probation services, rehabilitation, criminal justice, social work, education, research, public health, law and policy.

As well as this, it provides students with invaluable research skills for any other undergraduate degree.

What our students say about Sociology:

"The most interesting course I've studied in Sixth Form, it's really opened my eyes on society and institutions such as Education and Crime and how they are relevant to our lives. Anyone who doesn't choose A Level Sociology is missing out!"

"It offers explanations for why certain people act the way they do, why the world works the way it does, and who controls it!"

<https://www.aqa.org.uk/subjects/sociology/as-and-a-level/sociology-7191-7192>

THE TASK IS NOT JUST TO UNDERSTAND
THE WORLD BUT TO CHANGE IT.

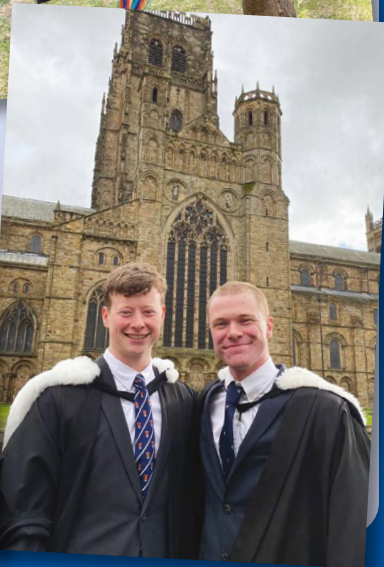
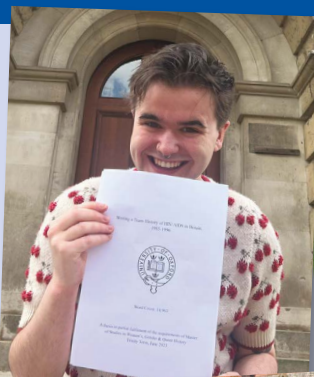


- KARL MARX



Sixth Formers from Buxton Community School

have been very successful in obtaining First Class and 2:1 Honours Degrees from a wide variety of universities including: Oxford, Cambridge, Durham, Warwick, Bristol, Sheffield, Manchester, Nottingham, Birmingham, Leeds, York, University of Arts London and many more.



Buxton Sixth Form

College Road
Buxton
Derbyshire
SK17 9EA

Tel: 01298 23122
E-mail: jackie.cruse@buxton.derbyshire.sch.uk

www.buxton.derbyshire.sch.uk